

WHAT'S NEW
**Sage 100 & Sage
 100cloud**
 Release 2020.0



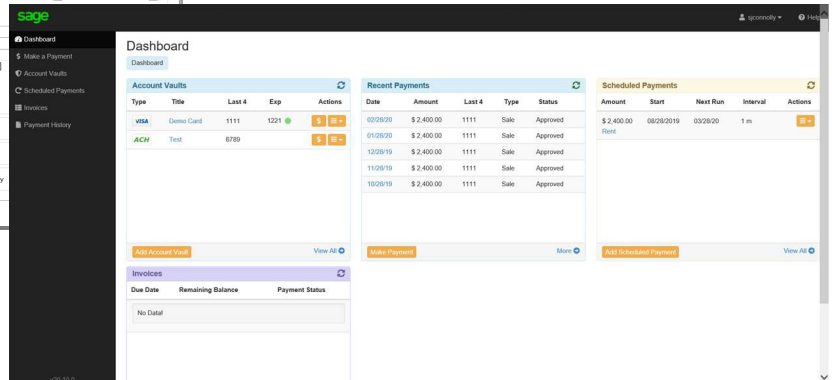
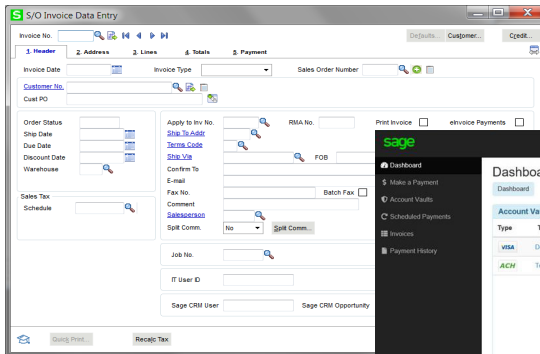
eInvoicing with Paya Connect

Sage 100cloud Only

By combining click-to-pay functionality with a customer portal, eInvoicing via Paya Connect allows businesses to increase cash-flow by removing friction from payment processing, save time through payment automation, and improve the customer experience through access to a self-service payment portal. Customers expect an easy, personalized, and intuitive solution. eInvoicing means you can spend less time collecting payments and more time on growing your business through increased focus on customer retention and new sales.

Release Highlights

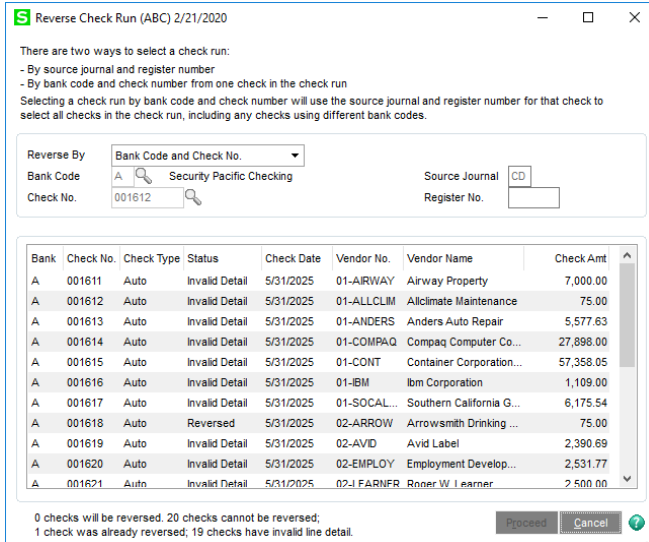
- Increase cash flow, save time on sales order processing, and improve the customer experience with eInvoicing via Paya Connect
- Save time with the new Reverse Check Run Utility
- Automatically calculate use-by, sell-by, and return dates via a new Lot/Serial expiration feature
- Easily comply with consumer privacy legislation with the new Personal Information Encryption utility



Reverse Check Run Utility

Sage 100cloud Only

If you've ever processed a check run with the wrong information, you'll know how much time and manual effort can be required to walk it back. This new utility in Accounts Payable will automate the reversal of checks or electronic payments created via the Check Printing and Electronic Payment Menu.



There are two ways to select a check run:
 - By source journal and register number
 - By bank code and check number from one check in the check run
 Selecting a check run by bank code and check number will use the source journal and register number for that check to select all checks in the check run, including any checks using different bank codes.

Reverse By: Bank Code and Check No. [A] Security Pacific Checking [CD]
 Bank Code: 001612 [001612] Source Journal: CD [CD] Register No.: []

Bank	Check No.	Check Type	Status	Check Date	Vendor No.	Vendor Name	Check Amt
A	001611	Auto	Invalid Detail	5/31/2025	01-AIRWAY	Airway Property	7,000.00
A	001612	Auto	Invalid Detail	5/31/2025	01-ALLCLIM	Allclimate Maintenance	75.00
A	001613	Auto	Invalid Detail	5/31/2025	01-ANDERS	Anders Auto Repair	5,577.63
A	001614	Auto	Invalid Detail	5/31/2025	01-COMPAQ	Compaq Computer Co...	27,898.00
A	001615	Auto	Invalid Detail	5/31/2025	01-CONT	Container Corporation...	57,358.05
A	001616	Auto	Invalid Detail	5/31/2025	01-IBM	Ibm Corporation	1,109.00
A	001617	Auto	Invalid Detail	5/31/2025	01-SOCAL...	Southern California G...	6,175.54
A	001618	Auto	Reversed	5/31/2025	02-ARROW	Arrowsmith Drinking ...	75.00
A	001619	Auto	Invalid Detail	5/31/2025	02-AVID	Avid Label	2,390.69
A	001620	Auto	Invalid Detail	5/31/2025	02-EMPLOY	Employment Develop...	2,531.77
A	001621	Auto	Invalid Detail	5/31/2025	02-J FARNER	Roner W. I earner	2,500.00

0 checks will be reversed. 20 checks cannot be reversed;
 1 check was already reversed; 19 checks have invalid line detail.

[Protect] [Cancel] [Help]

Lot / Serial Expiry

Sage 100cloud Only

Expiration dates can now be added for items with lot or serial numbers when items are received into inventory or produced through Bill of Materials. Expiration dates can be manually entered, or you can enter settings to automatically calculate them. You can also calculate sell-by, use-by, and return dates to determine how many days before or after an item's expiration date it can be distributed.

This is a very important feature for manufacturers, distributors and retailers who deal with food and beverage, chemicals, medical equipment, and items in many other industries. This is the first phase of our lot / serial journey. Lot / Serial tracking is coming soon.

Personal Information Encryption

Sage 100cloud Only

The California Consumer Privacy Act, as well as additional state legislation, is increasingly requiring companies to 'forget' business contacts. While this is possible using existing features in Sage 100, this utility makes it far easier to comply with privacy legislation without having to delete records.

As a means to comply with consumer privacy laws that require you to either delete or deidentify PII so that it can't be used to identify an individual, there are now two ways to encrypt an inactive customers' or vendors' personally identifiable information (PII):

1. An Encrypt button has been added to the Additional tab in Vendor/Customer Maintenance.
2. An Encrypt Vendor Personally Identifiable Information utility has been added to the Accounts Payable Utilities menu. You can use this utility to encrypt vendor PII if the vendor's record has already been deleted in Vendor/Customer Maintenance.

After PII is encrypted, it no longer appears in task windows or reports. Furthermore, the data cannot be viewed in Data File Display and Maintenance or accessed through Visual Integrator or external reporting using an ODBC data source.

International Addresses & Expanded Name Fields

Sage 100 & Sage 100cloud

Expanding name fields from 30 to 50 characters means that long company names like "The Chesapeake Bay Watershed Preservation Foundation" will no longer need to be abbreviated to "Chesapeake Bay Watershed Preservation Foundation." What this means is increased useability and improved data integrity.

To support businesses with international customers, address fields (including Address, City, State, Country, and Telephone) have been expanded. Zip code / postal code validation now includes country code. State code can now be user-maintained.

Other Improvements

Multiple POs on a Single Receipt

Sage 100cloud only

How often do you place multiple POs with a single vendor only to have them all arrive at the same time? Now you can combine them into a single receipt. This is similar to the Multiple Sales Orders on One Invoice feature, and works by grouping selectable orders based on a primary order and any orders that have matching criteria

Deferred User Defined Field Update

This feature in Custom Office provides users with the ability to save User Defined Field (UDF) modifications / additions without committing them to the dictionary. It introduces a new Pending Changes summary window and allows pending changes to be updated all at once to multiple tables. UDF updates can also be scheduled in Task Scheduler.

Mask Display Attribute

A widely requested feature, masked data fields can now be created using Custom Office. Data in these fields is masked only on entry, and are not encrypted.

Grid Enhancements in Custom Office

Sage 100cloud only

This feature introduces a new user-interface in Custom Office similar to how grids appear in the main product. It allows drag and drop to move columns, as well as modification of column name, size, width, secondary grid description, as well as hidden and locked parameters. The feature now allows UDFs to be used with existing Sage 100 logic groups, and makes it possible to bulk hide columns. Users can now also create grid customizations by Customization Group.

Job Cost Billing Work in Progress Enhancements

In support of ASC 606 / IFRS 15, Work in Progress (WIP) has been improved so that the % relieved from the WIP account will match the % of project complete

Migration Wizard Enhancement

This improvement to the Migration Wizard prevents the unintentional removal of files from a new installation by checking and warning a user if the "New Installation Directory" and "Migrating Data Files from" locations are the same.

New Common Components Location

This enhancement enables Workstation Synchronization to run without elevated permissions. Common Components is now located in C:\ProgramData instead of C:\ProgramFiles\CommonFiles. Sage 100 Workstation Setup does still require elevated permissions to install



About SWK Technologies

SWK Technologies is proud to serve as a leading Sage 100 partner, with a strong sales and implementation presence complemented by a scalable software development resource for customizations and enhancements within Sage 100. In addition to our own development for our clients, our custom Sage 100 solutions are considered the "Go-To" resource within our partner channel, enabling SWK to bring new products to the market very rapidly.

info@swktech.com

www.swktech.com

For a complete list of features and enhancements available in this release, visit www.swktech.com/wp-content/uploads/2020/03/WhatsNew_Sage100_2020_SWKTech.pdf