



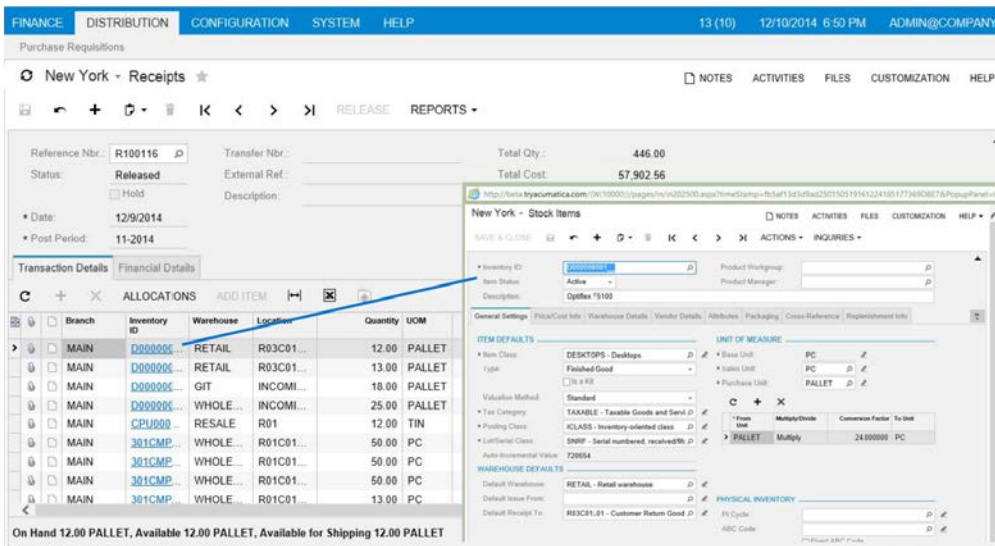
# INVENTORY MANAGEMENT

**IMPROVE CUSTOMER SERVICE WITH REAL-TIME ACCESS TO AVAILABLE INVENTORY, INVENTORY-IN-TRANSIT, AND INVENTORY COSTS**

Control system-wide inventory to manage your distribution process efficiently and without losing track of costs. Receive inventory to a specific location and drill down to change item default lot/serial numbers, valuation methods, accounts, and more.

## INVENTORY MANAGEMENT FOR THE WAY YOU DO BUSINESS

- **Multiple Warehouses.** Manage multiple warehouses with location-specific inventory quantities, allocations, and costs. Redistribute inventory from a central warehouse to other warehouses automatically upon receipt. Assign specific access rights for each warehouse to determine who can access information and enter transactions.
- **Multiple Valuation Methods.** Use standard cost, moving average, FIFO, and item-specific methods. Select a different valuation method for each inventory item. Make direct adjustments to cost and physical inventory count using report and inquiry screens.
- **Lot and Serial Numbering.** Track inventory by lot or serial number. Assign or enter lot/serial numbers on receive, issue, or assembly. Associate item-specific valuation methods to serial numbers to track specific costs.



Gain real-time insights into inventory levels linked with accounting.

## KEY BENEFITS

### GET SECURE ACCESS FROM ANYWHERE

- View, modify, and analyze inventory using any popular web browser
- Restrict access to inventory by item or warehouse

### IMPROVE CUSTOMER SATISFACTION

- Honor contracts and fulfill orders as promised with real-time access to inventory levels and customer-specific pricing

### MANAGE COSTS

- Accurately track costs of goods sold and inventory holding costs
- Create general ledger entries directly from inventory transactions

### SPEED UP DATA ENTRY, MINIMIZE ERRORS

- Save time entering data with inventory sub-items and flexible screen layouts
- Reduce errors by setting default accounts, subaccounts, valuation methods, lot and serial numbers, storage locations, and sub-item values

### ACCELERATE DECISION-MAKING

- Use drill-down reports and dashboards to gain access to past information and provide insights into future needs



**INVENTORY MANAGEMENT FEATURES AND CAPABILITIES**

<b>Expiration Dates</b>	Deduct expired items from your list of available inventory by assigning an expiration date for each lot and serial number. Acumatica can automatically issue items with the earliest expiration date to minimize losses.
<b>Transaction Reason Codes</b>	Measure trends and spot problems by assigning reason codes to inventory transactions. Reason codes can be linked to both general ledger (GL) accounts and inventory levels for financial and operational reporting.
<b>Two-Step Transfers</b>	Inventory transfers are performed in two steps so you can track goods in transit between locations with GL entries into and out of "in transit" accounts.
<b>Inventory Bin/Location Control</b>	Specify the types of items and transactions allowed, picking priority, and cost by bin and location.
<b>Purchase Order Automation</b>	Automatically generate purchase orders based on stock level and replenishment algorithms. Orders go to the vendor with the best price and delivery time.
<b>Sales Order Discounts and Promotions</b>	Manage complex pricing and discount policies, including volume discounts and multiple discounts per item. Maintain policies for price overrides.
<b>CRM Integration</b>	Convert CRM opportunities to sales orders without re-entering pricing and discount information. Customer service can locate orders to verify shipping and delivery status.
<b>Inventory Sub-Items</b>	Simplify reporting and tracking by separating items into sub-categories such as size, color, and style. Associate separate cost and quality information with each sub-item.

**THE ACUMATICA ERP DIFFERENCE**

Acumatica delivers a full suite of integrated business management applications unlike any other ERP solution on the market today.

**STREAMLINE OPERATIONS**

**Manage your business more efficiently:**

- Automate processes
- Control workflows
- Access the system from anywhere on any device—including mobile
- Promote collaboration with all-inclusive user licensing

**ADAPTABLE SOLUTION**

**Add and extend:**

- Deploy in-house or in a private or public cloud
- Easily configure your solution to fit your needs
- Add capabilities such as CRM or data visualization at any time
- Extend to other solutions and applications beyond ERP

**YOUR BUSINESS ACCELERATED**

**Get a single version of the truth:**

- Accelerate business performance and make smarter decisions with automated processes, real-time data collection, financial analyses, and forecasting
- No per user pricing – system scales as your business grows