

# Sage 300 ERP

Multicompany and International  
Operations Management Brochure



See your business  
in a new way.

Realize the future of your  
business today.






## See your business in a new way. Realize the future of your business today.

It's a competitive world for multinational and multientity companies. Prosperous opportunities abound, but so do big business challenges. International businesses operate in multiple currencies and time zones. Your global workforce reports to different divisions or entities that operate independently. Your customers speak many languages. At the end of the day, it's all one business. And you need that to be reflected in your business intelligence and financial reports.

Sage 300 ERP Multicompany and International Operations Management provides powerful business management tools to help you see your business in a new way so you can improve global operations, consolidate financial results, and accelerate growth. Turn your business dreams into reality with real-time visibility across your business and support for multicurrency transactions and multiple languages you need to succeed.



“Sage 300 ERP further enabled growth of a centralized hotel accounting office. We can more cost-effectively manage the hotel’s accounting from a central office for properties that may not necessarily require a full accounting team on site. For hotels with accounting departments on property, we reduce training costs and setup time because we standardize on the back-office solution.”

–Ian Rogers, director of corporate accounting  
Radisson Hotels & Resorts

## A Complete View of Your Multicompany, International Business

No matter where you do business, or how many subsidiaries, divisions, and entities you operate, Sage 300 ERP Multicompany and International Operations Management helps you maximize business insight, improve intercompany communication, and consolidate global financial results. With the power to bring information together from every corner of your business, Sage 300 ERP puts critical information at your fingertips for enhanced visibility and easier, more effective daily and long-term planning.

- Set up multiple companies in one or more databases, run processes, close books, and report results by company or in a consolidated company.
- Effortlessly bring together, analyze, and report on multiple business units, subsidiaries, companies, and countries within your organization.
- Strengthen collaboration between locations when you integrate systems and enhance connectivity.
- Leverage business intelligence to consolidate financial information across multiple companies.
- Easily conduct business worldwide with built-in support for multiple languages and multicurrency transactions.
- Capitalize on the global economy by supporting and guiding subsidiaries nationally and internationally.



“A large amount of our consolidation used to happen as an end-of-the-day process—with information from the various areas of our business being integrated manually. The Sage 300 ERP solution will streamline our operations significantly, enabling us to speed up bookings, sales order processing, and new memberships. For example, we now have a live link from our London operations to our main systems in Edinburgh, from where we operate our mail order business and dispatch items purchased from our online shop.”

—Joan Saywood, head of finance  
Scotch Malt Whiskey Society

## Designed for Growth

As your business reaches around the globe, you'll need a business management solution that is designed to grow with your evolving business needs. Not only is Sage 300 ERP specifically designed to support international businesses, it also keeps your total cost of ownership low by supporting multiple technologies, databases, and operating systems. Available in multiple editions, Sage 300 ERP gives you the opportunity to add users and adopt greater functionality as your business grows.

**Superior architecture** allows you to grow with the changing size of your business, customize easily to fit special needs, and offer flexible deployment options and languages.

**An end-to-end business management solution for your specific business** offers a wide range of high-quality integrated vertical tools to match your unique needs and a strong network of more than 400 development partners.

**Ease of installation** enables you to quickly roll out Sage 300 ERP in many locations.

**Ultimate scalability** offers extensive customization capabilities and the ability to easily add functionality when you need it.

**Anytime, anywhere access** provides complete access to your accounting system through a standard web browser.

**Ease of use** with intuitive wizards and a familiar interface make configuration and navigation a breeze.

**Global network of support** is provided by business partners and customers in over 150 countries.



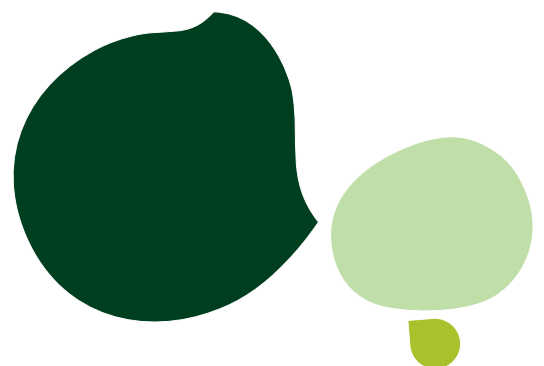
# Comprehensive Multientity Accounting

Most businesses that operate internationally do so under a number of subsidiaries or other legal entities. In some cases, these are like divisions of one company in disparate locations. In other operational models, the subsidiaries may function like independent businesses from day to day. One thing is always true: To make successful strategic plans and achieve financial objectives, your corporate headquarters needs accurate, reliable multientity accounting that is easy to implement and use. With Sage 300 ERP, you'll effortlessly process intercompany transactions and roll up the numbers across all entities for precise insight into the overall financial health of your business.

## Sage 300 ERP G/L Consolidations

Sage 300 ERP Multicompany and International Operations Management allows both hard and soft consolidations of general ledger transactions. Transfer and merge General Ledger account and transaction information between separate company and branch office locations. It is also designed to enable subsidiaries and holding companies to run without being on the same network or accounting database. Sage 300 ERP provides a feature set that allows your company to define the level of detail to consolidate and provides a comprehensive audit trail.

- **Consolidate multiple general ledgers** by transactions, net period changes, or account balances. Maintain a separate general ledger for your consolidated ledgers or consolidate with the head office or central general ledger.
- **Consolidate general ledgers with differing fiscal years** and periods and with different account structures by using a mapping table.
- **Include budgets** for a range of years in the consolidated company.
- **Consolidate all accounts or a partial set** of accounts using the automatic balancing account (exclude entries from the consolidation if needed).
- **Merge multiple accounts in subsidiaries** into single holding company accounts.
- **Transfer transactions originating in a holding company** back to subsidiaries to centrally maintain payroll or fixed assets.
- **Automatically perform currency translation** with the provision of gain or loss on translation. Translate amounts from functional currency or source currency in the originating ledger, and specify the translation rate type.
- **Consolidate multicurrency and single currency accounts** and general ledgers with differing functional currencies.





SAMINO - G/L Consol. Export Setup

File Help

Process ID: SAMLTD    Export to Sample Company, LTD.

Main | Transactions | Criteria | Currency | Mapping

Unit

Unit ID: 01    Unit Balancing Account:    Description:

Data

<input type="checkbox"/> Accounts	<input type="checkbox"/> Export Inactive Accounts	<input type="checkbox"/> Set Inactive Accounts To Active	<input type="checkbox"/> Account Opt. Fields
<input type="checkbox"/> Source Codes	<input type="checkbox"/> Segment Codes	<input type="checkbox"/> Account Groups	<input type="checkbox"/> Optional Fields from G/L Setup
<input type="checkbox"/> Budgets	<input type="checkbox"/> Transactions	<input type="checkbox"/> Optional Fields from C/S Setup	

Allow Runtime Edit

Add    Delete

Accurate, reliable  
multientity  
accounting that is  
easy to implement  
and use.

## Sage 300 ERP Intercompany Transactions

When you're keeping track of dealings between multiple entities or subsidiaries, it's important that your accounting system accurately reflects intercompany transactions. This functionality in Sage 300 ERP Multicompany and International Operations Management simplifies and significantly reduces the amount of work required for intercompany accounting. Enter transactions that affect more than one company and Sage 300 ERP automatically distributes these transactions across two or more companies. In addition, built-in flexibility automatically generates intercompany loan account entries according to relationship tables (called routes) that you can define. If the different companies are operating under different local currencies, Sage 300 ERP adjusts for that, too.

- **Enter simplified and automated intercompany transactions** for any number of companies, with multicurrency support and a comprehensive audit trail.
- **Automatically create loan account entries** for intercompany transactions.
- **Process intercompany General Ledger** journal entries and intercompany Accounts Payable invoices, debit notes, and credit notes.
- **Automatically distribute invoices** to as many general ledger accounts as you require by defining distribution sets.
- **Create an unlimited number of routes** to define relationships between companies, including multilevel routes between companies with any number of intermediate companies.
- **Fully integrate with Tax Services** to handle tax computations for expensed, allocated, or recoverable taxes.

Comp...	Company Name	Status	Func. Curr...	Post G/L Batches	Post A/P Batches	A/P Clearing ...	Account Desc...
SAMINQ	Sample Company ...	Active	USD	Yes	Yes	2040	Accts payable...
SAMLQ	Sample Company ...	Active	CAD	Yes	Yes	2040	Accts payable...

ICT General Ledger    ICT Accounts Payable

Next Batch       

Next Posting Sequence

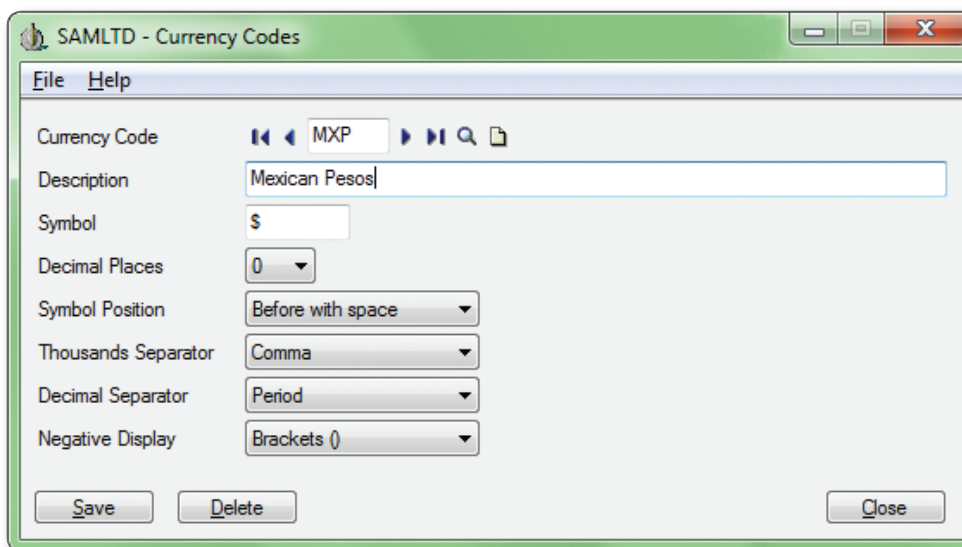


## Support for International Operations

Sage 300 ERP is designed to help you manage business operations around the world with one global ERP application. The flexible configuration of Sage 300 ERP makes it easy to set up powerful localization capabilities, including the ability to do business in multiple currencies and multiple languages.

### Sage 300 ERP Multicurrency

To grow your business worldwide, you need to make transactions in multiple currencies. When you are buying, suppliers may prefer to price goods or services in the local currency or another currency. When you're selling, your customers expect you to accept payment in their currency. Management needs to be able to analyze the financial results of each subsidiary in both local currencies and the company headquarters' functional currency. Finally, the corporate executive team needs analysis of the impact of fluctuating currency values on global financial results.



Sage 300 ERP Multicompany and International Operations Management delivers powerful and comprehensive multicurrency accounting functions. It supports an unlimited number of currencies and rate types and offers complete support for the euro, as well as full EMU accreditation. Give your business a global competitive edge with sophisticated currency management. Sage 300 ERP empowers your accounting professionals to:

- Use an unlimited number of currencies and rate types.
- Enter transactions in any currency.
- Process payments and receipts in any number of currencies.
- Print reports in both functional and source (local) currencies.

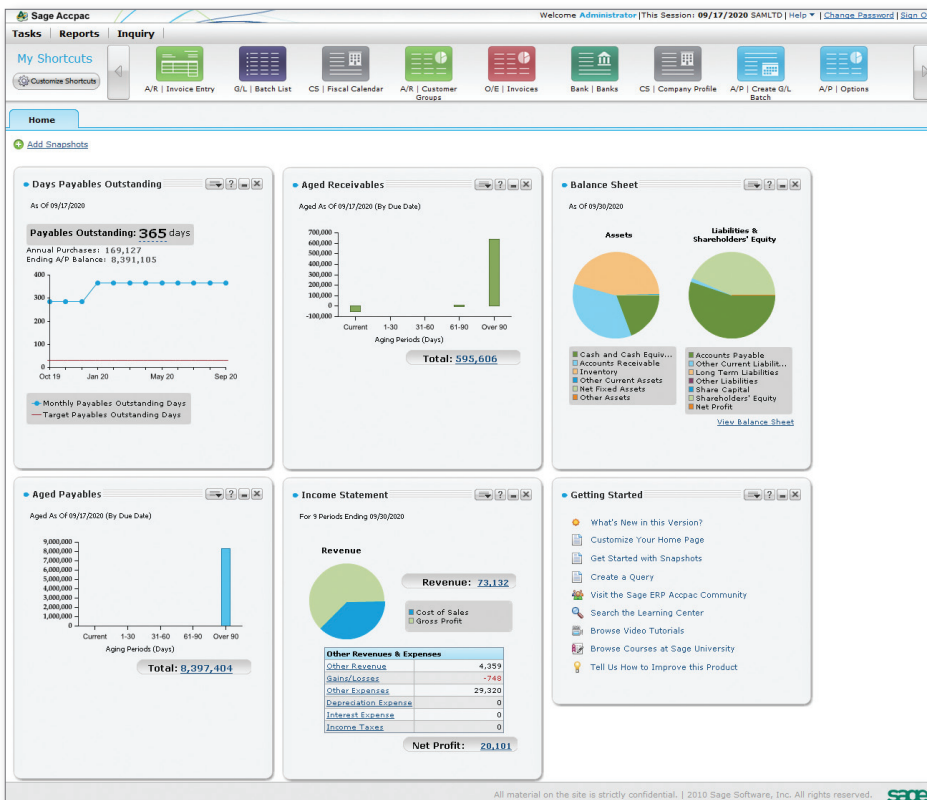


“Across our enterprise, we are using the U.S. dollar, the Canadian dollar, the Australian dollar, the Mexican peso, and other currencies . . . our core accounting needs are not out of the ordinary, but when coupled with the multicurrency and consolidation requirements, we need a powerful, scalable application, and Sage 300 ERP completely fills the bill. It handles the accounting for the various currencies extremely well.”

—Christien Landry, IT manager  
Major Drilling Group International

## Sage 300 ERP Multiple Languages

It's easier to use business management software when you can interact with it in your most comfortable, native language. That's why Sage 300 ERP is designed with multilanguage support. Achieve true global localization in this core business management system using language translations set up by system user. Sage 300 ERP comes with five languages included, and it is fully translatable for additional languages.



All over the world, your business needs to speak with one voice to your employees, your suppliers, and your customers. Sage 300 ERP Multicompany and International Operations Management provides powerful yet easy-to-use tools to help you do just that—from support for multiple languages and multicurrency transactions to consolidated financial results and business intelligence. Whether you operate as one company, ten divisions, or 100 entities, you can lead your business to profitability and success and with Sage 300 ERP.



Visit  
**[www.swktech.com](http://www.swktech.com)**  
or call us at  
**877.979.5462** for more  
information today!

**Sage 300 ERP**

6561 Irvine Center Drive | Irvine, CA 92618 | 1-866-530-7243 | [www.Sage300ERP.com](http://www.Sage300ERP.com)

©2012 Sage Software, Inc. All rights reserved. Sage, the Sage logos, and the Sage product and service names mentioned herein are registered trademarks or trademarks of Sage Software, Inc., or its affiliated entities. All other trademarks are the property of their respective owners.

300\_MIO\_BR 05/12

