

IMPLEMENT YOUR MANUFACTURING ON CLOUD TECHNOLOGY TO ACHIEVE COST SAVINGS AND FUTURE FLEXIBILITY

Adaptable ERP Software

BRING YOUR OWN DEVICE

Acumatica allows you to work from anywhere using your choice of device. Now with an interface that is tablet-friendly and optimized for mobile devices, you can work on a PC, Mac, iPad, or any other device with a browser.

SCALE AND GROW

Acumatica is Cloud-based so you can add capacity quickly. Since there are no user-based fees, you can add users in seconds.

DEPLOY ACCORDING TO YOUR NEEDS

Get Acumatica as a subscription (SaaS) or purchase the license. Deploy on-premises, on a hosted server, or on a Cloud platform.

YOU OWN YOUR DATA

So you can access it any time.

ADAPT AND INNOVATE

You get access to code and web development tools so you can adapt Acumatica to your existing processes.

On-the-Ground Support

Acumatica is sold through a global network of value added resellers (VARs) who provide business planning, implementation, customization, local support, and other services.

www.acumatica.com

PRODUCT CONFIGURATOR

The JAAS Advanced Manufacturing Software (JAMS) Product Configurator is a powerful tool that enhances quality and accuracy in the manufacturing of complex products. Allowing the user to configure a products' features, options, and dimensions, JAMS Product Configurator provides the tools you need to maximize your quote-to-order and manufacturing performance.

The rules-based Product Configurator allows products to be configured in multiple ways on quotes, sales orders and/or production orders. JAMS Product Configurator greatly reduces the number of bills of material/routing for a finished part based on a variety of features, options, dimensions, and functions.

The screenshot shows the Acumatica Product Configurator interface. At the top, there are navigation tabs: ORGANIZATION, FINANCE, DISTRIBUTION, MANUFACTURING (selected), CONFIGURATION, SYSTEM, and HELP. The main header includes 'Ace Doors - Configuration Maintenance' and a star icon. Below this, there are input fields for Configuration ID (C000000022), Revision (A1), BOM ID (0000000000040), and Inventory ID (TS100 - TS100 Series Dock Seal). The status is 'Pending' and the description is 'Configured Dock Seal'. There are tabs for Features, Attributes, Keys, Price, and Defaults. A table below shows feature selections:

Feature ID	Label	Description	Sort Order	Min Selection	Max Selection	Min Qty	Max Qty	Lot Qty	Visible	Results Copy
COLORSELECTION	Door Color	Door Fabric Color	1	1	1				<input checked="" type="checkbox"/>	<input checked="" type="checkbox"/>
FABRICSELECTION	Door Fabric	Door Fabric Material	2	1	1				<input checked="" type="checkbox"/>	<input checked="" type="checkbox"/>
FABRIC	Fabric Items	Actual Fabric/Color Inventory Items	3						<input type="checkbox"/>	<input checked="" type="checkbox"/>

Below the table, there are tabs for Options and Rules. Another table shows options:

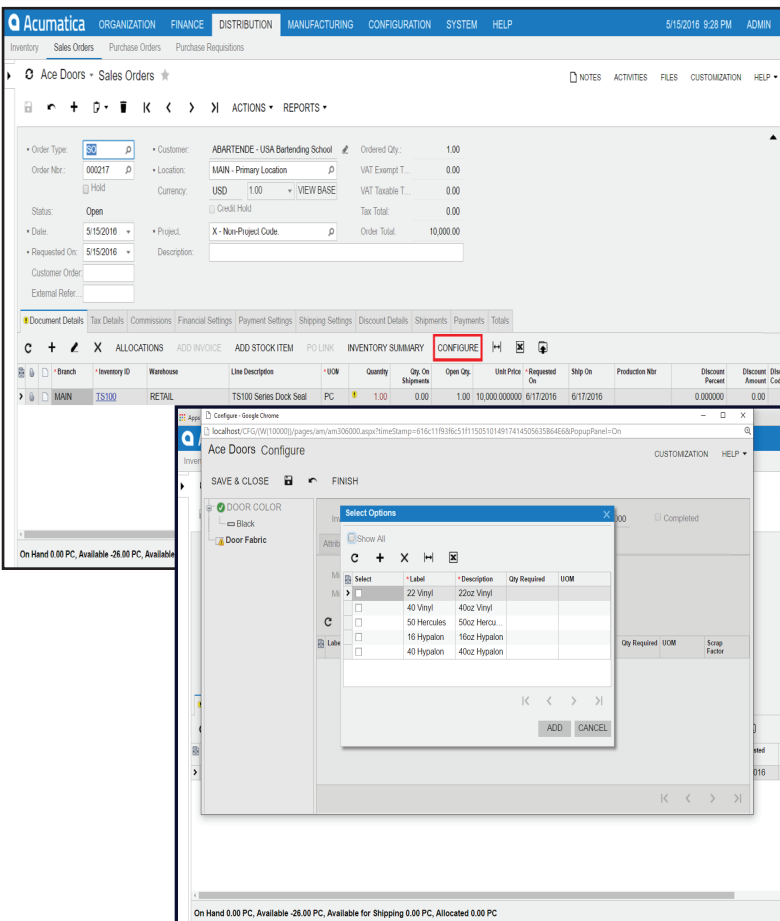
Label	Inventory ID	Description	Fixed Include	Qty Enabled	Qty Required	UOM	Oper. Nbr	Min Qty	Max Qty	Lot Qty	Scrap Factor	Type	Phantom Routing Factor	Price Factor	Results Copy
16HYFALONB	16HYFALONB	Hypalon 16oz Black Fa...	<input type="checkbox"/>	<input type="checkbox"/>	=(DH)*[DW]+[CW]	PC						Regular	Exclude	1	<input checked="" type="checkbox"/>
22VINYLBLK	22VINYLBLK	Vinyl 22 oz Black Fabric	<input type="checkbox"/>	<input type="checkbox"/>	=(DH)*[DW]	SQFT						Regular	Exclude	1	<input checked="" type="checkbox"/>
22VINYLBLU	22VINYLBLU	Vinyl 22 oz Blue Fabric	<input type="checkbox"/>	<input type="checkbox"/>	=(DH)*[DW]	SQFT						Regular	Exclude	1	<input checked="" type="checkbox"/>
22VINYLB RN	22VINYLB RN	Vinyl 22 oz Brown Fabric	<input type="checkbox"/>	<input type="checkbox"/>	=(DH)*[DW]	SQFT	020					Regular	Exclude	1	<input checked="" type="checkbox"/>
22VINYLG RN	22VINYLG RN	Vinyl 22 oz Green Fabric	<input type="checkbox"/>	<input type="checkbox"/>	=(DH)*[DW]	SQFT						Regular	Exclude	1	<input checked="" type="checkbox"/>

KEY FEATURES

Configure to Order	An item can be configured using predetermined features and options. The results of the configuration can carry forward to a production order.
Dimensional Capability	The system provides for multiple dimensional calculations and formulas in order to calculate the material requirements for the specific components for the configuration.
Configuration Pricing	Based on the features and/or options chosen, the system has multiple price roll-up capabilities to determine the actual unit price for that specific configured item.

ADDITIONAL FEATURES OF THE ESTIMATING MODULE

FEATURE	DESCRIPTION
Order History and Look-up	Easily look-up a customer's previous configuration to create the order or make adjustments from the prior configuration.
Flexible Copy Process	Providing the user an easy way to create a new configured order by simply copying or modifying an existing configured order or quote.
Configuration Revisions	Allows for multiple revisions of the same configuration, showing a history of the revisions and who created the revision.
Multi-Level Configuration	Support multi-level configurations of regular, non-phantom, items with multiple production orders created for each regular configured item.
Formula Validation	Validates formula calculation based upon minimum/maximum attribute values or quantities for selected features and options.



JAAS Systems specializes in software solutions for manufacturing companies. The JAAS team has over 200 years of experience in the manufacturing industry with a strong blend of business, financial, operational, technology and consulting expertise. Combine this with our extensive background providing business software solutions and the result is JAAS Advanced Manufacturing Software (JAMS), a powerful manufacturing solution that delivers real-time information with a lower cost of ownership.

JAMS is a flexible software solution that supports multiple types of production environments, keeps you in control with real-time visibility and communication tools - just what you expect in a feature-rich, end-to-end manufacturing solution. Because our expertise is MANUFACTURING, we make it our business to understand your business.

"When manufacturing is YOUR business, it's OUR business"™

COMPLETE MANUFACTURING AUTOMATION

Manage sales, ordering, inventory, warehousing, production, shipping, fulfillment, and accounting from a single, integrated solution.

All of your employees, partners, and customers can create dashboards that deliver real-time information to speed decision making and improve business processes without the hassle of client software, VPNs, or complex IT management.