

Accellos One Warehouse Manage Edition

SAGE MAS 90

THE WAREHOUSE AS A DIFFERENTIATOR

The Aberdeen Group recently published a study that identified these as the top issues facing today's supply chain executives:

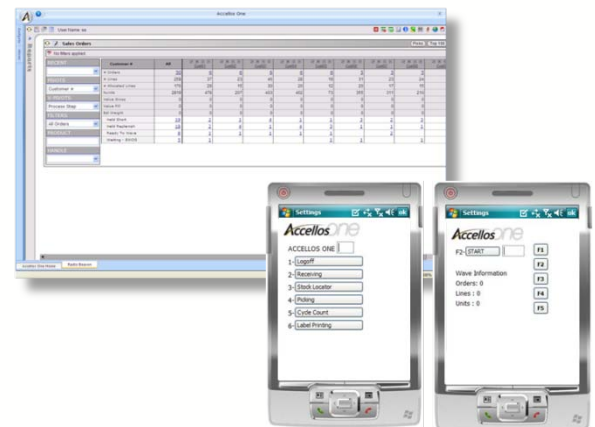
- The need to support increased sales without increasing staff or space
- Limitations/availability of warehouse space
- Increasing demand/supply fluctuations

Today's warehouse managers are consistently finding that 2 to 5% improvement across various performance metrics can mean hundreds of thousands of dollars in bottom-line returns to the business.

With the economy that we find ourselves in, there aren't many places within the organization, short of reducing head count, that a company can find that kind of return. Focusing on technology to complement your business processes can help you manage key performance indicators within the warehouse like:

- Order accuracy
- Order shipped on time and complete
- Minimize inventory carrying costs
- Decrease warehouse labor costs

Accellos can help. We've built our Manage solution to provide the out of the box tools and the extensibility to tackle even the most difficult tasks in the warehouse.



“By a margin of nearly three-to-one, multi-site distributors cite customer demands for faster order turn-around as the top pressure they are facing today.”

Ian Hobkirk, Aberdeen Research

Put your warehouse to work for you...

TIGHTEN CONTROL

Accellos One Warehouse provides you with the tools to maintain better inventory accuracy minimizing writedowns and writeoffs. To insure compliance with your customers labeling requirements. Improve your control in these and many more key areas of your business

MAXIMIZE EFFICIENCY

Leverage our advanced processes to improve your picking and receiving functions. To eliminate manual order checking. These are just a few areas where Accellos One Warehouse helps your team gain efficiency and effectiveness.

IMPROVE VISIBILITY

Accellos One Warehouse's web-centric design gives you the ability to allow internal and external users visibility into the status of warehouse operations. Providing visibility creates competitive differentiation for your business that drives ROI.

AVAILABLE ANYWHERE

Accellos One Warehouse's browser-based design makes it simple to use regardless of location. We've made it very familiar and intuitive to learn how to manage:

- Order allocations
- Simple warehouse transfers
- Wave planning
- Multiple warehouse zones
- Management reporting
- Kitting

FLEXIBLE HANDHELDS

The Manage Edition puts the power of the system in the hands of your warehouse workers in a performance driven user experience designed to effectively accomplish:

- Picking
- Receiving
- Locating Stock
- Cycle counting
- Physical count
- Lots/Serial tracking

SEAMLESS INTEGRATION

The Manage Edition has been designed using a services-based integration framework that makes it simple to communicate with your:

- Sage MAS 90 ERP system
- UPS/FedEx/DHL/USPS system
- RFID labels and portals



90 S. Cascade, Suite 1200
Colorado Springs, CO 80903
719.433.7000 ph
719.433.7038 fax
www.accellos.com



Development Partner

✓ ENDORSED